



**INTRACOM**  
**T E L E C O M**

Technology Shaping the Future

**Smarter Connected Societies**  
**New products & solutions launched in 2016**

Follow



Link



Watch

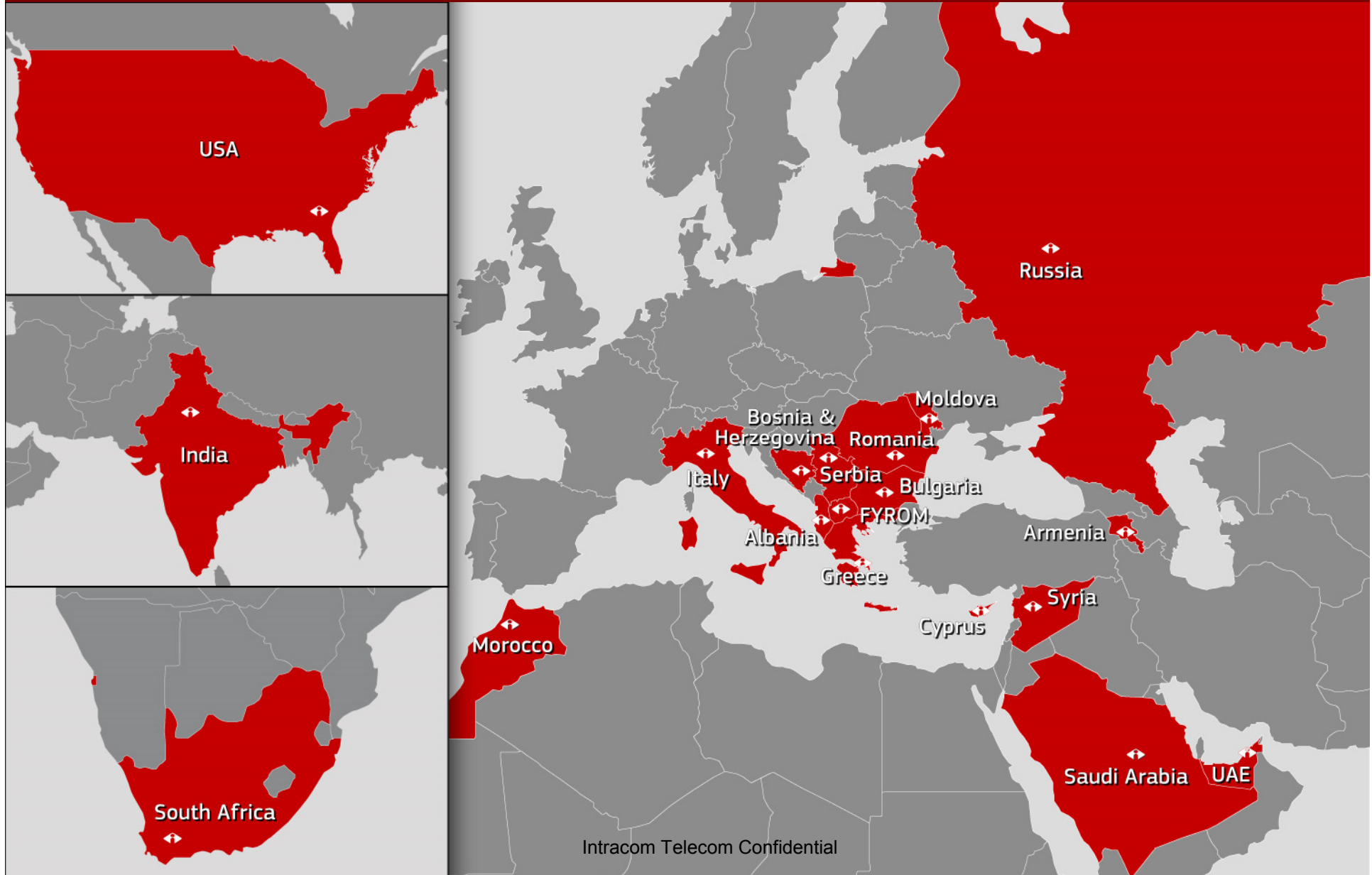


# Core Offerings



Intracom Telecom, abreast with the latest technological developments, offers a comprehensive products and solutions portfolio to address customer existing and future needs. Over 100 customers in more than 70 countries choose Intracom Telecom for its state-of-the-art technology.

# International Presence







- ▶ Vertical organization from idea-to-market capability
- ▶ Average 7% of revenue on annual R&D investments
- ▶ Research labs with state-of-the-art infrastructure, for design, rapid prototype development & validation of advanced telecom products
  - Microelectronics ASIC / FPGA design
  - Microwave & millimeter-wave design lab
  - DSP & System Modeling lab
  - Embedded Software & NMS development
  - Sophisticated mechanical part design
- ▶ OEM Design Center for 3rd party vendors
- ▶ Strong R&D presence at European level - key participation in EU H2020 research framework
  - Continuing the company's innovation legacy in the European research arena for more than 25 years.
- ▶ Strategic research: strong participation in EU's flagship initiative for 5G
  - Participation in 3 of the 18 forefront research and innovation projects that will lead Europe's way to 5G.
- ▶ Research focus on SDN/NFV, high-performance low-latency wireless transmission, smart broadband access, intelligent network management, information-centric networking, smart grid, big data, e-health.

Theme for MWC 2016

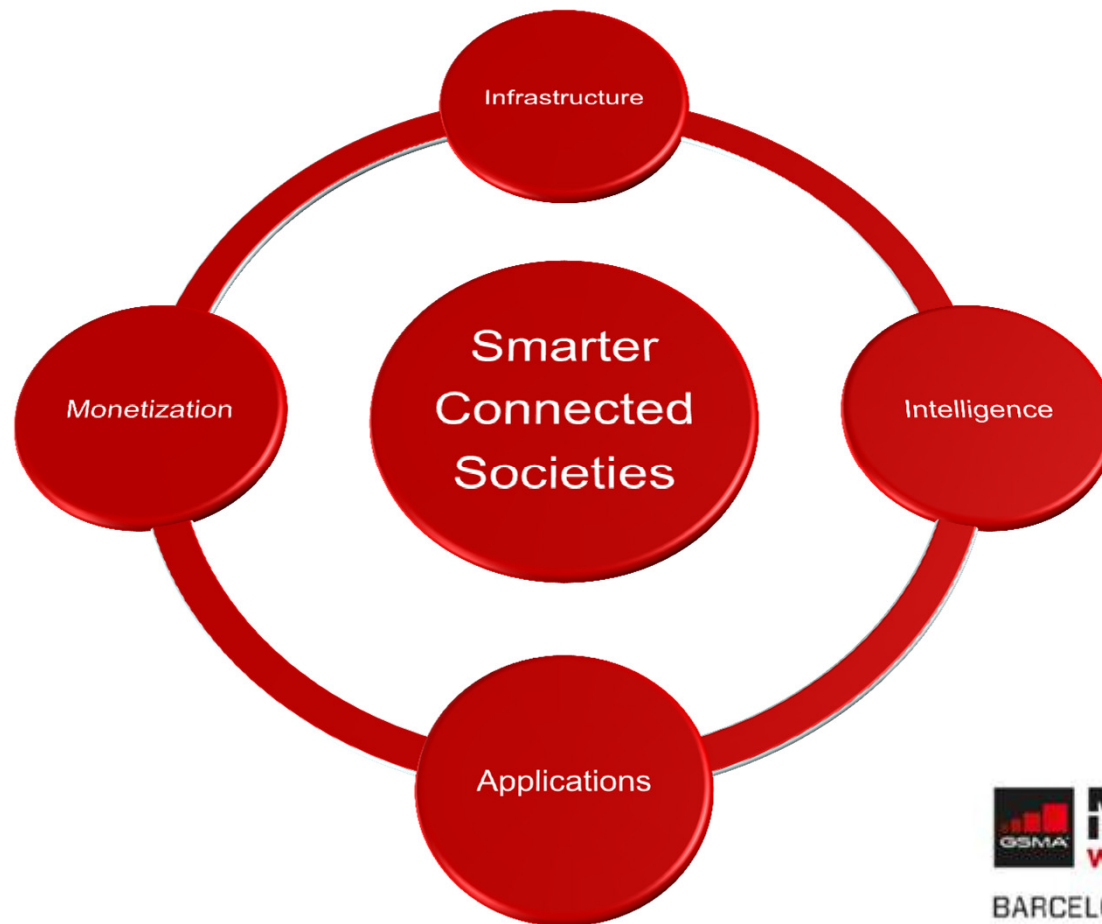
A nighttime photograph of a city street with long-exposure light trails from cars, creating vibrant orange and white streaks. Buildings and trees are visible in the background under city lights.

# SMARTER CONNECTED SOCIETIES

**MOBILE™**  
WORLD CONGRESS  
BARCELONA 22-25 FEB 2016

Hall 7 | stand 7B54

# Topics for MWC 2016





# City surveillance

## Solution Highlights

### Any Location Reached



Software-defined PtMP or P2P operation in microwave frequencies with customization of different firmware profiles enables extended range in urban landscape

### CapEx & OpEx Savings



Microwave multipoint architecture offers CapEx savings by connecting multiple terminal stations with a single hub. Millimeter-wave StreetNode™ units, operating in license-free, result in Low OpEx

### Flexible Powering



Powering options (direct DC, direct AC or PoE) adapt to the most convenient powering available on site

### Unified Management



uniMS™ is managing radio equipment and wireless services as well as protecting the entire network and managed elements against intentional or accidental unauthorized access

## Breakthrough Performance throughout the City Landscape!

### Automations for Fast & Easy Deployment



Zero-touch configuration and auto-alignment capabilities StreetNode™ radios. Each radio can be installed and configured in just 30 minutes by non-specialized personnel using an Android tablet and Bluetooth

### 1 Gbit/s Backhaul



Available capacity satisfies and exceeds the requirements of high-definition IP cameras used for demanding face-recognition algorithms

### Flexible Networking



3 x Gigabit interfaces per radio and an embedded switch make the deployment in complex topologies possible and offer trouble-free connection to surveillance IP cameras or other type of sensor equipment

### All-in-one



Compact and aesthetically-pleasing box with embedded antenna; custom finishes on demand





# SMB/SME and residential access

## Solution Highlights

### CapEx & OpEx Savings



Same hardware for backhaul and less equipment compared to purely P2P deployments

### Configurable Operation



Point-to-MultiPoint (PtMP) or or Point-to-Point (P2P) at street level

### Flexible Powering



3 x powering options – direct DC, AC PoE, DC PoE – to adapt to the power source available locally (StreetNode™, OSDR-S)

### Unified Management



One management suite, uniMS™, manages everything, from radio equipment to wireless services

## Innovative Non-LOS Network Build-up with StreetNode™ Terminals!

### Fast Installation



Terminal is installed and run in less than 30 minutes by non-specialized personnel using an Android tablet and Bluetooth

### Unique Auto-alignment



Network is configured automatically when StreetNode terminals are added or removed

### Advanced Features

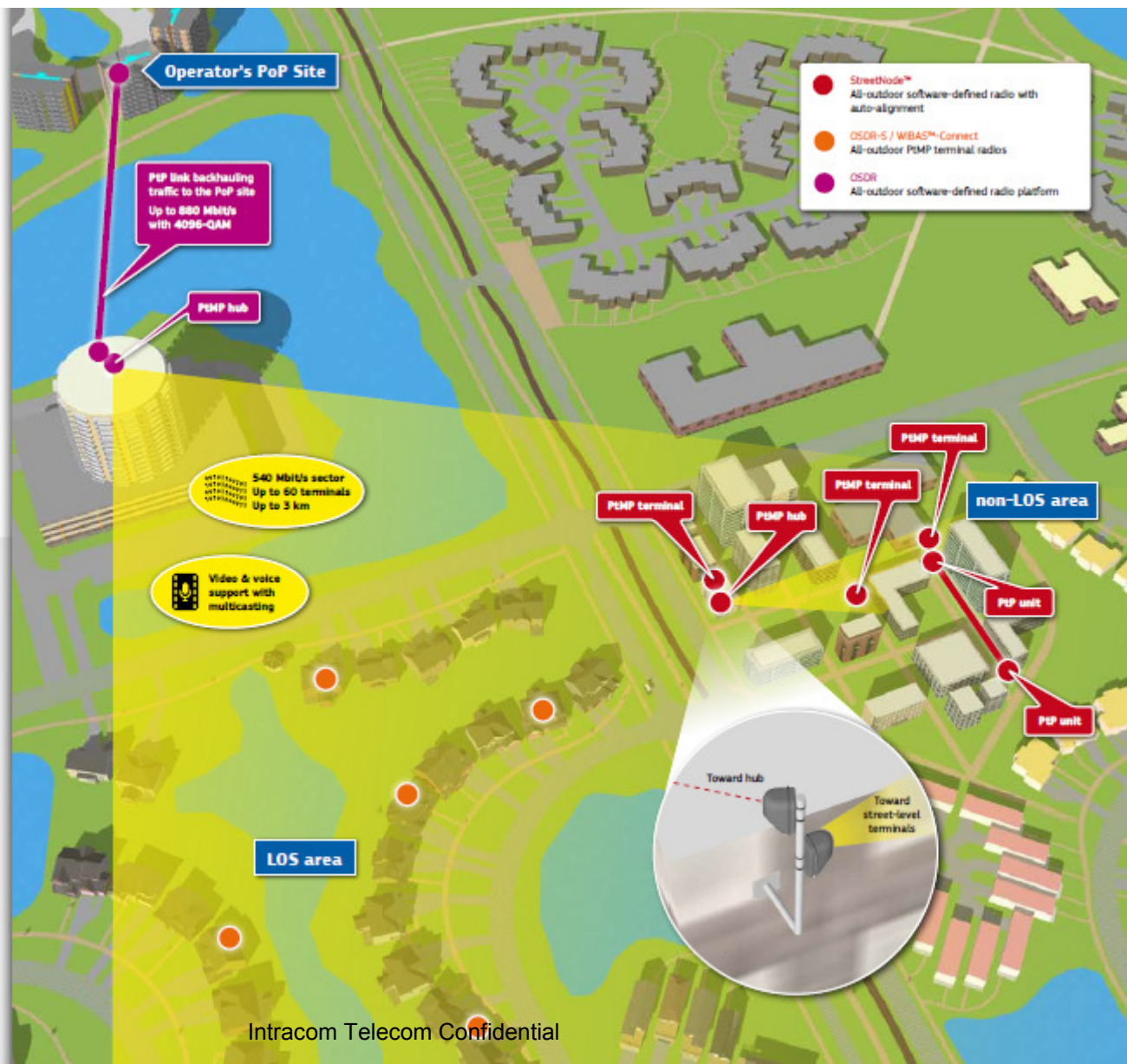


3 x Gigabit interfaces and an embedded switch make additional external Ethernet switches unnecessary

### All-in-one



Compact and aesthetically-pleasing box with embedded antenna; custom finishes on demand





# Hotels, resorts, convention centers



## Solution Highlights

### OpEx Savings



Most links operate only in OpEx-free unlicensed or light-licensed E-Band spectrum

### CapEx Savings



Up to 3 Gbit/s Ethernet capacity with minimum hardware, two small-size all-outdoor radio units per link. No, or minimal, requirements for additional installation infrastructure

### Unified Management



One intuitive management suite, uniMS™, with advanced SON features manages everything, from radio equipment to wireless services

## Enhancing Quality of Internet Service Experience!

### Automations for Fast & Easy Deployment



Zero-touch configuration and auto-alignment (StreetNode™ V60-PTP). The radio is installed and configured in up to 30 minutes by non-specialized personnel using an Android tablet and Bluetooth

### Flexible Networking



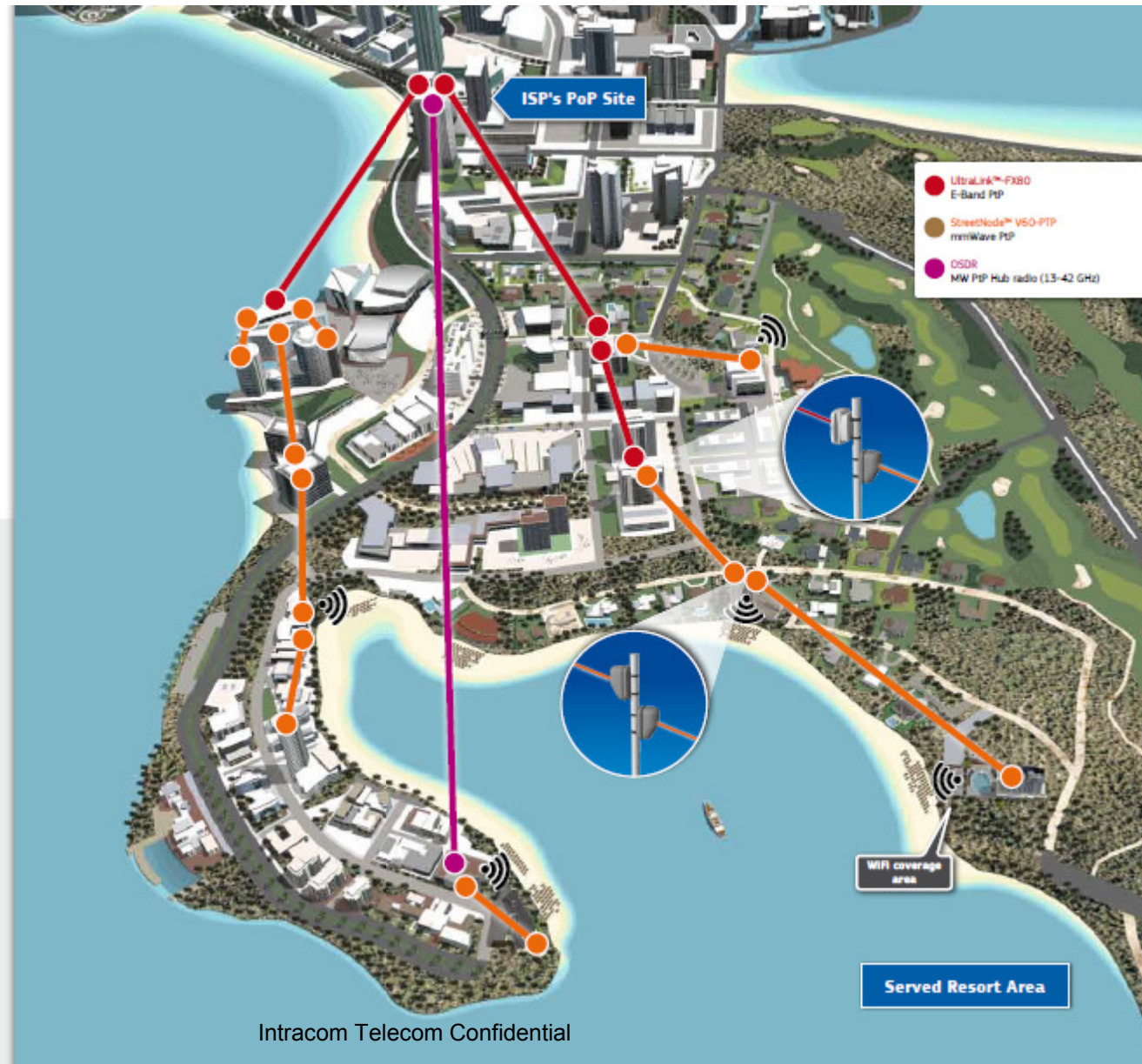
3 x Gigabit interfaces per radio and an embedded switch make the deployment in complex topologies possible and offer trouble-free connection to standard in-building switches and/or routers

### Flexible Powering



Powering options (direct DC, direct AC or PoE) adapt to the most convenient powering available on site

9



Intracom Telecom Confidential



# Public Safety



## Solution Highlights

### Backward Compatibility



Legacy interfaces can be accommodated in all-outdoor cabinets to provide legacy connectivity where available

### Unified Management



One management suite, uniMS™, manages everything, from radio equipment to wireless services

## Powerful & Flexible Connections!

### Industry-Leading Capacity



Highest radio throughputs per link with modulations up to 4096-QAM

### Configurability



Point to Multi-Point (PtMP) or Point-to-Point (PtP) operation for all-outdoor systems (OSDR)

### Complete Portfolio for Transport



The PtP family of products span all the segments of the network, from the edge sites to the high aggregation nodes



Intracom Telecom Confidential



# Road safety and Traffic Monitoring

## Solution Highlights

### Excessive IP Bandwidth Over the Air at Long Distances



Best suited for remote areas Gigabit wireless connectivity, with ranges from hundreds of meters to several km

### OpEx Optimized



Install-and-forget equipment that is extremely reliable in challenging environments, requiring minimal maintenance

### Efficient Management



One management suite, uniMS™, manages everything, from radio equipment to wireless services

## Fast Network Buildup & Robust Performance!

### Fast Installation & Activation



All-outdoor lightweight units for simple pole installation. StreetNode™ V60-PTP also features unique auto-alignment of its embedded antenna. Multi-Gigabit interfaces per station enable the connection of multiple cameras

### Advanced Features for Efficient IP Over-the-Air Transmission

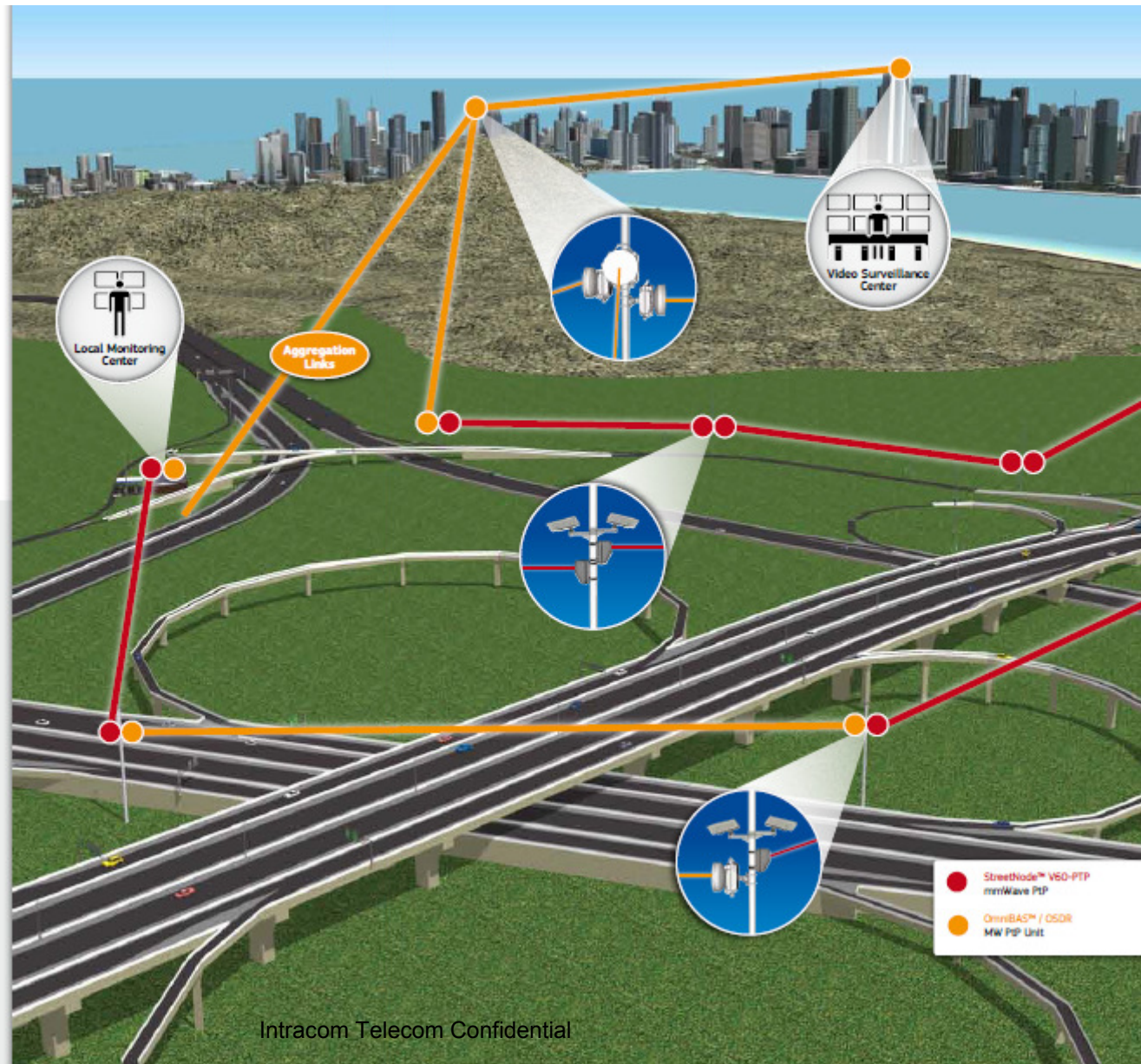


Embedded Ethernet switch and QoS for efficient video streams and other IP traffic transmission. Robust radio performance also ensures high IP bandwidth under all conditions

### All-in-one Solution Delivery



Integrated (OmniBAS™, OSDR) or embedded (StreetNode™ V60-PTP) antennas and modular indoor units (OmniBAS™) for the central sites





# Small Cell backhaul

## Solution Highlights

### OpEx Flexibility



Backhaul network operates in both licensed and unlicensed bands

### Flexible Powering



3 x powering options – direct DC, AC PoE, DC PoE – to adapt to the power source available locally (StreetNode™, UltraLink™-FX80)

### Unified Management



One management suite, uniMS™, manages everything, from radio equipment to wireless services

## Breakthrough Performance on the Street!

### Configurability



PTMP or PTP operation in MW (licensed) frequencies at street level

### Fast Installation



Radio is installed and commissioned in less than 30 minutes by non-specialized personnel using an Android tablet and Bluetooth

### Unique Auto-alignment



Network is configured automatically when StreetNode™ radios are added or removed

### Advanced Features

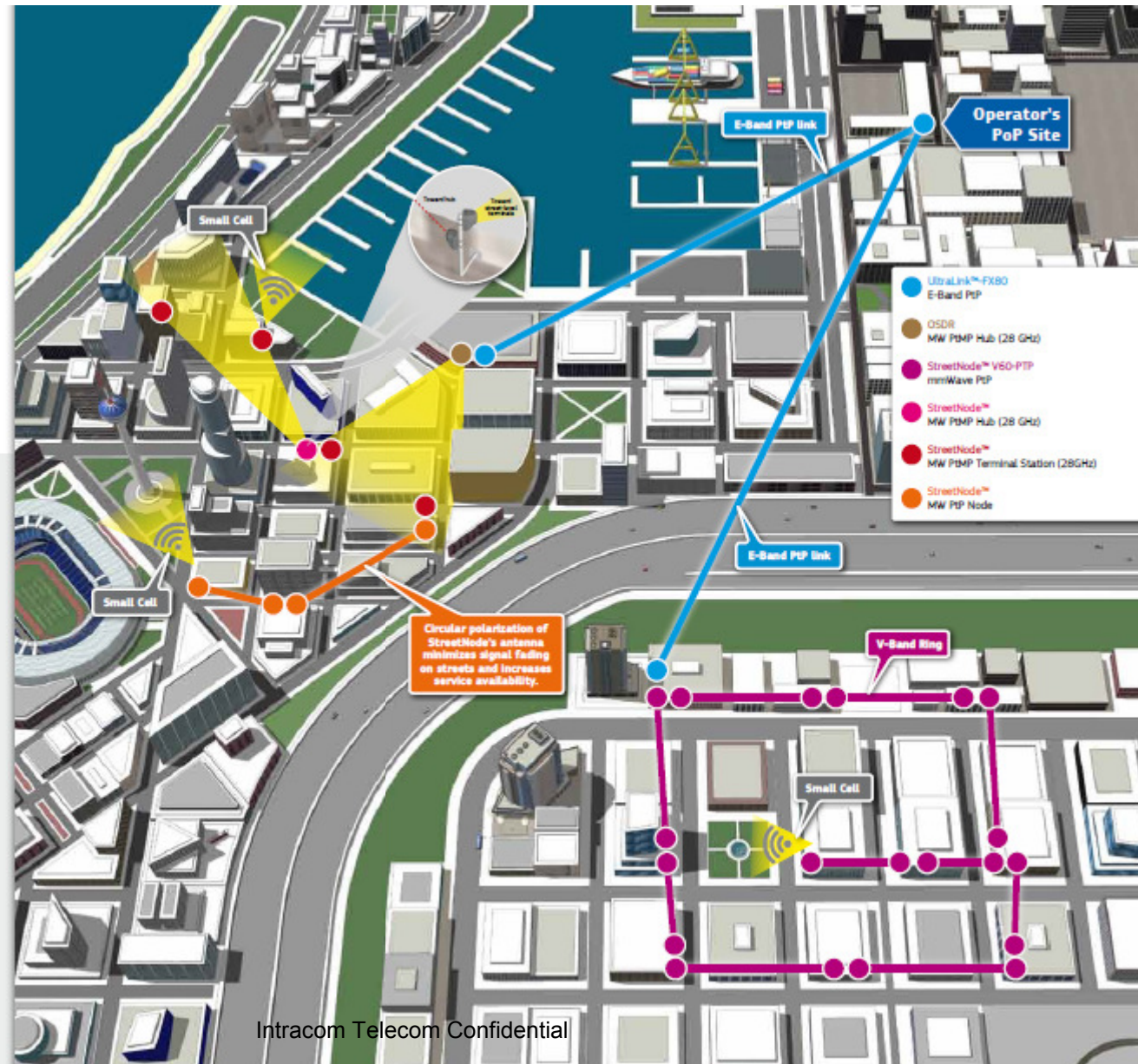


3 x Gigabit interfaces and an embedded switch make additional external Ethernet switches unnecessary

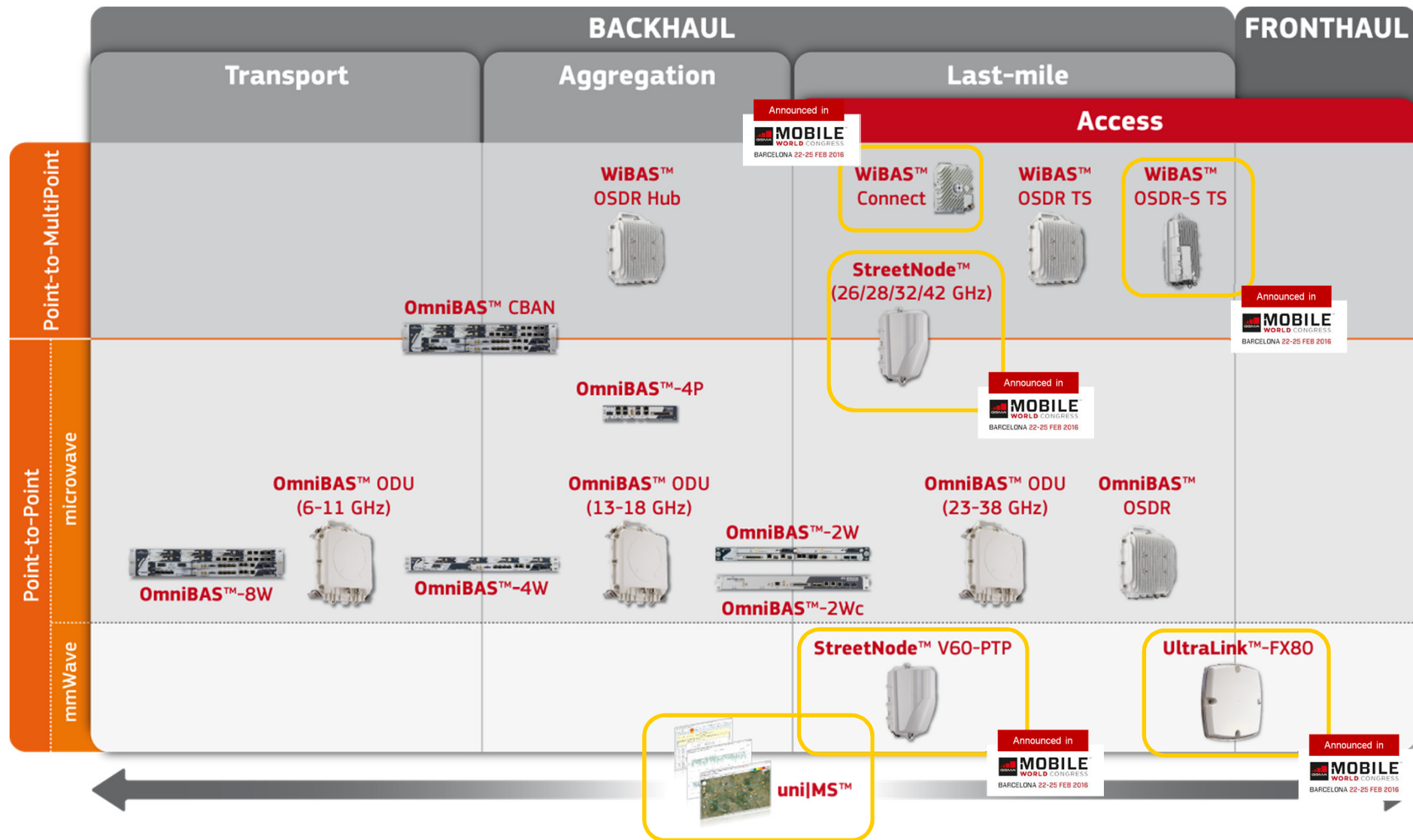
### All-in-one



Compact and aesthetically-pleasing box with embedded antenna; custom finishes on demand



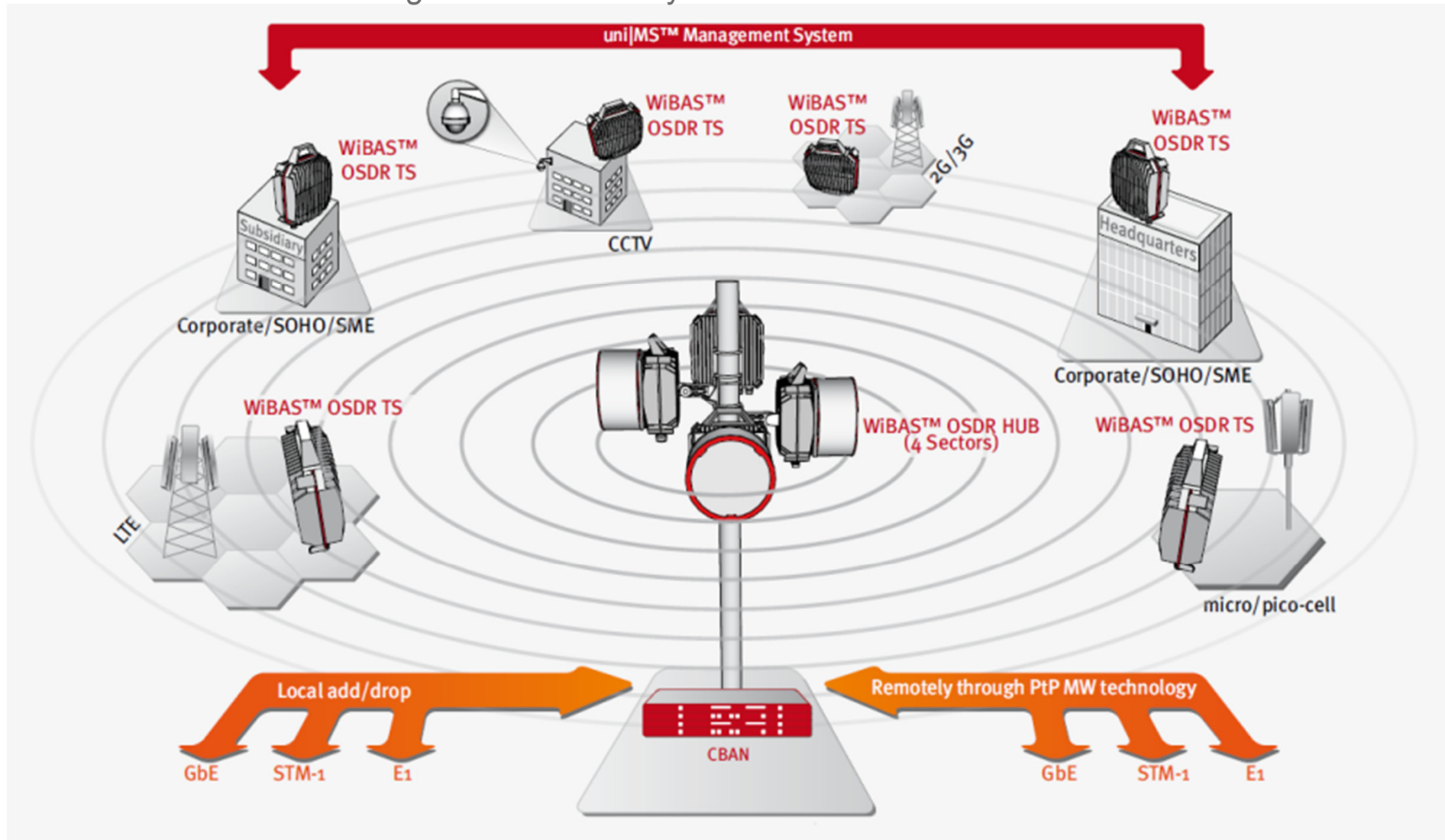
# Telecommunication Infrastructure Produced in Romania



# WiBAS™ PtMP Architecture



Point-to-MultiPoint Single-Carrier FDD System





# WiBAS™ miniOSDR

## Compact software defined radio at 42GHz

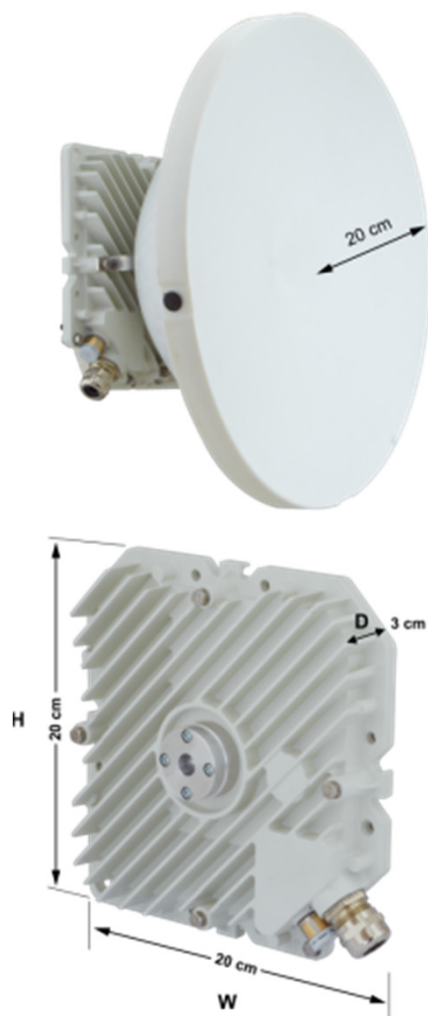


- ▶ Frequency Bands 42GHz
- ▶ One Unit, Three Profiles (PtP, PtMP Hub, PtmP TS)
- ▶ Max Sector ETH Capacity: 540Mbps @ 1024QAM/56MHz
- ▶ 90° / 180° coverage (sector)
- ▶ 0.3 and 0.6 antennas (terminal)
- ▶ ETH Interfaces
- ▶ Up to 30 Terminals (per sector)
- ▶ Direct AC, DC, PoE versions



# WiBAS™ Connect\*

## Compact Low Cost Terminal Station

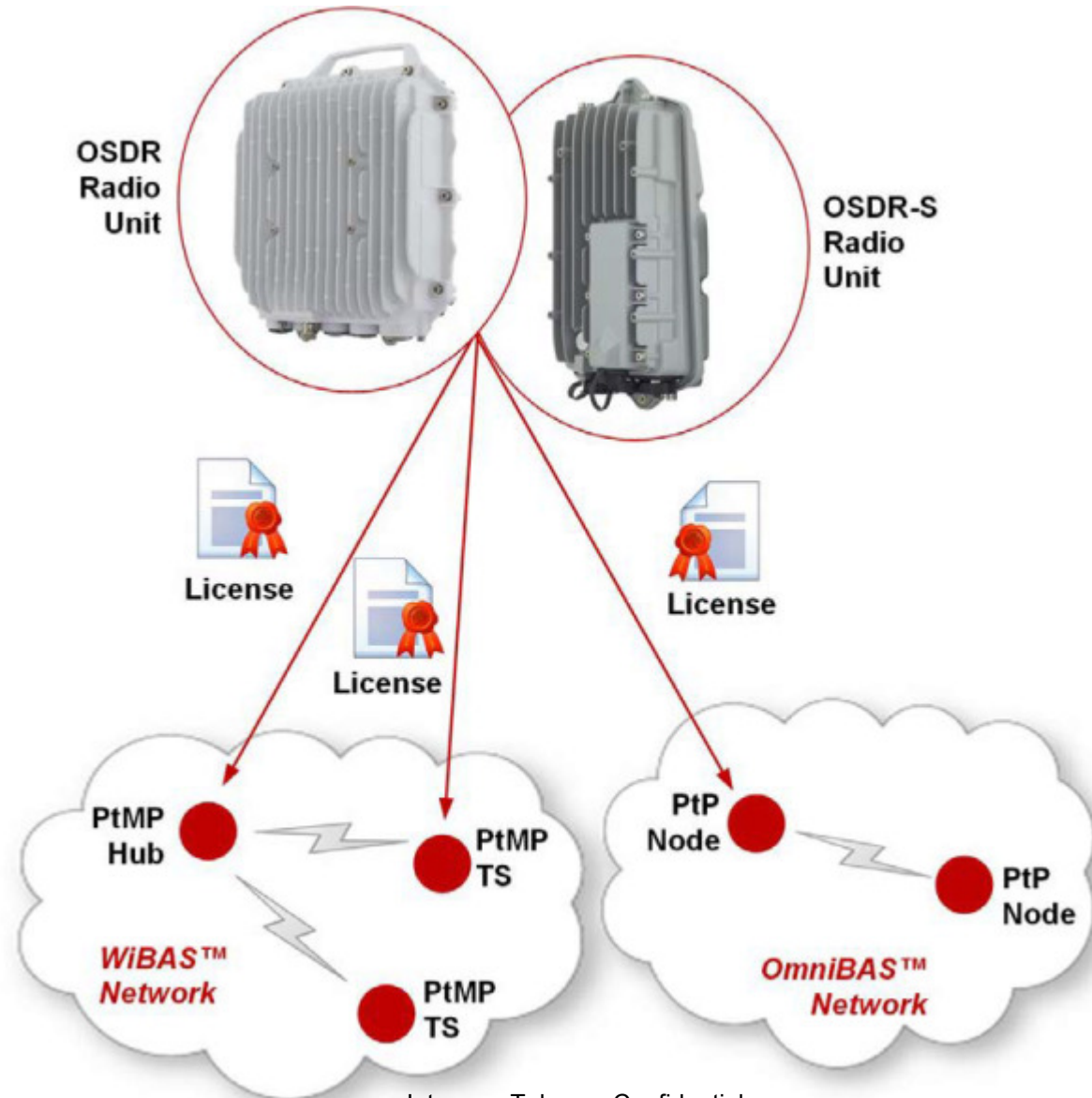


- ▶ **HFDD**
- ▶ Compact Form Factor (**20x20x3 cm**)
- ▶ Frequency Bands 10.5, 26, 28GHz
- ▶ Max Sector ETH Capacity: 540Mbps @ 1024QAM/56MHz
- ▶ Max Terminal ETH Capacity: 270Mbps @ 1024QAM/56MHz
- ▶ 0.3 and 0.6, panel antennas
- ▶ 1xETH Interfaces
- ▶ Up to **60 Terminals** (per sector)
- ▶ Interoperable with WiBAS OSDR (following SW upgrade)
- ▶ PoE

\*Q3 2016



# WiBAS Operation Mode Licensing



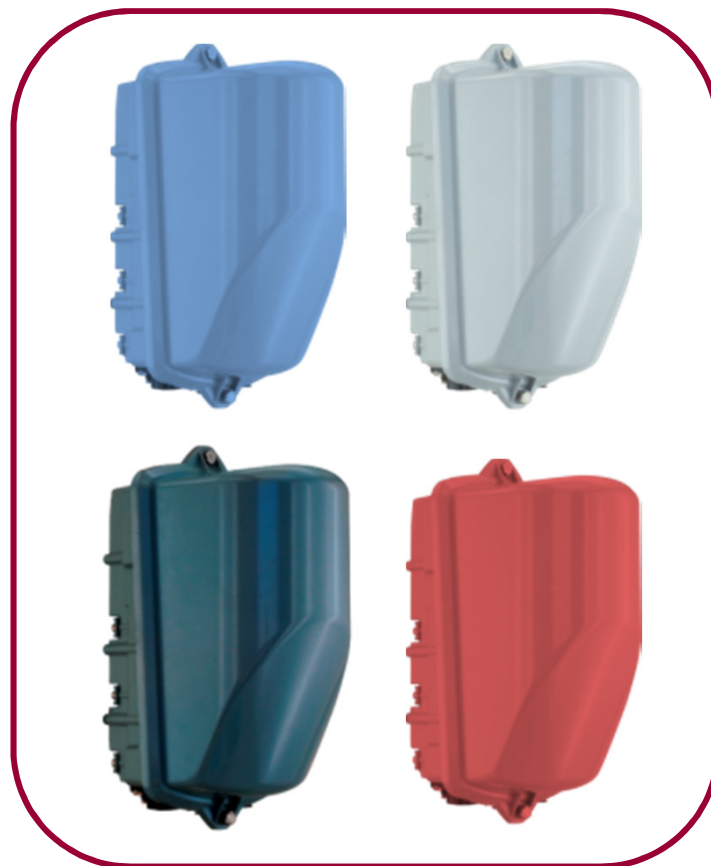


# STREETNODE™ microwave radios

## Unparalleled deployment agility



- ▶ SON transmission
- ▶ Versatility with Software Defined Radio
  - PTP link
  - PTMP Sector
  - PTMP terminal
- ▶ All with the same HW !
- ▶ Compact shape/size:
  - ▶ 276 x 184 x 146 mm, 2.5kgr
- ▶ Blends with Urban shapes and sizes
- ▶ Available in different colors
- ▶ Suitable for street level deployment
- ▶ **Certified for FCC and ETSI/ITU**



Announced in



# STREETNODE™ millimeter wave radios

## Unparalleled deployment agility



- ▶ Operating in the **57- 66 GHz** spectrum
- ▶ Different HW variants
  - **57- 64 GHz / D.S. : 3.5GHz**
  - **59 - 63 GHz / D.S. : 2GHz**
  - **58.25 - 63.25 GHz / D.S. : 2.5GHz**
  - **64 - 66 GHz / D.S. : 990MHz\***
- ▶ **6-Level HACM up to 128QAM**
- ▶ Up to **1.7Gbps Full Duplex** throughput
- ▶ **Integrated antenna with Automated Link Alignment**
- ▶ **Automated Channel Scanning & Interference Detection**
- ▶ **Certified for FCC and ETSI/ITU**



Announced in



BARCELONA 22-25 FEB 2016

# Ultralink-FX80™

## Leading the capacity race



- ▶ Operates across the entire E-Band 71-76/81-86GHz
- ▶ **7-Level HACM up to 256 QAM**
- ▶ Maximum **Ethernet Full Duplex** capacity:
  - **Up to 1.8 Gbps @ 250 MHz**
  - **Up to 3 Gbps @ 500 MHz**
- ▶ **CPRI transport mode** (up to 2457.6 Mbit/s)
- ▶ Multiple Antenna options
  - **Integrated Flat Panel Antenna (43dBi)**
  - **30/60 cm external Parabolic (44/51dBi)**
- ▶ Manual Alignment – Optional alignment assistance by scope
- ▶ **Confirmed evolution for 1GHz bandwidth, 6Gbps capacity**

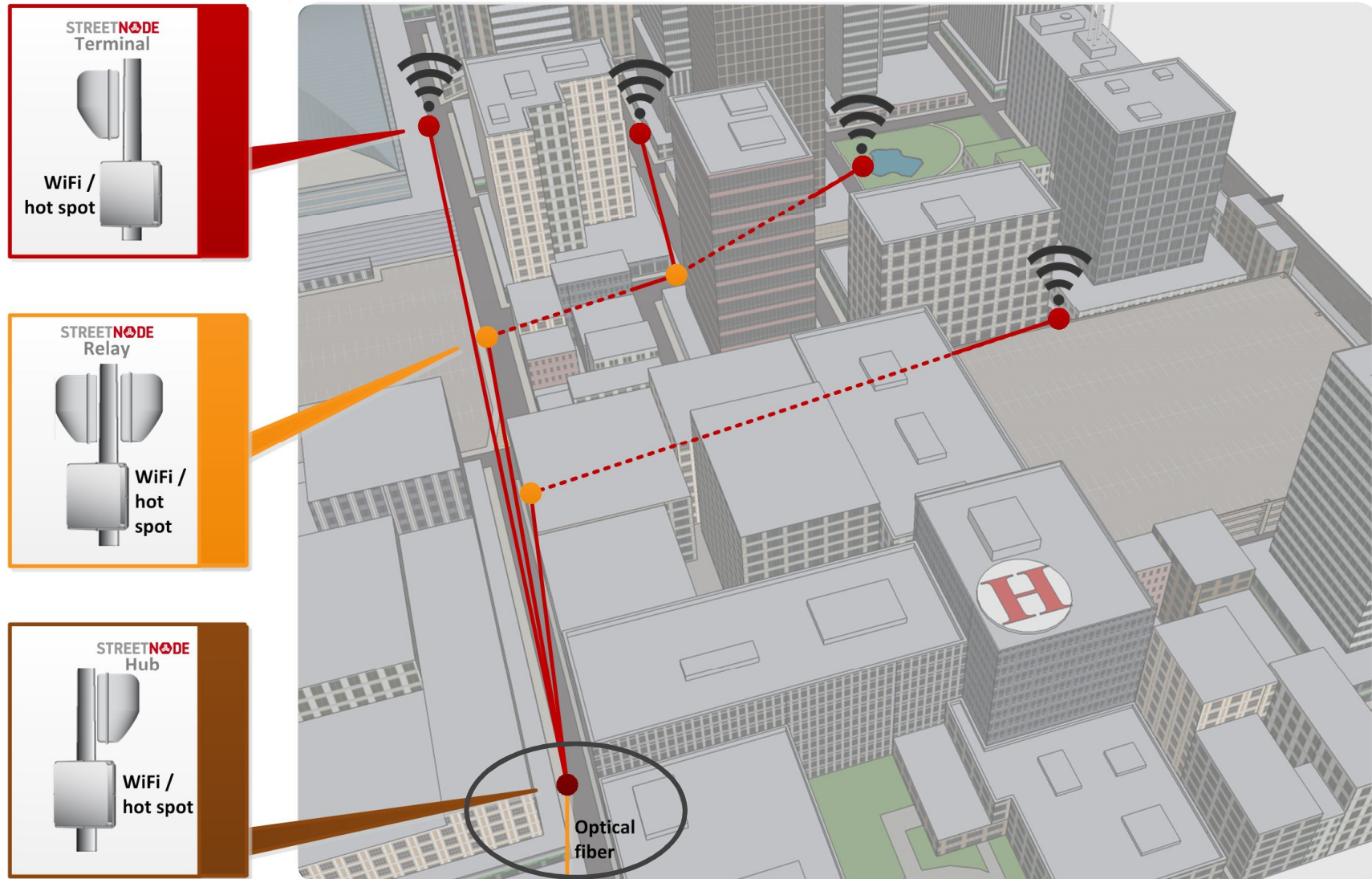


Announced in

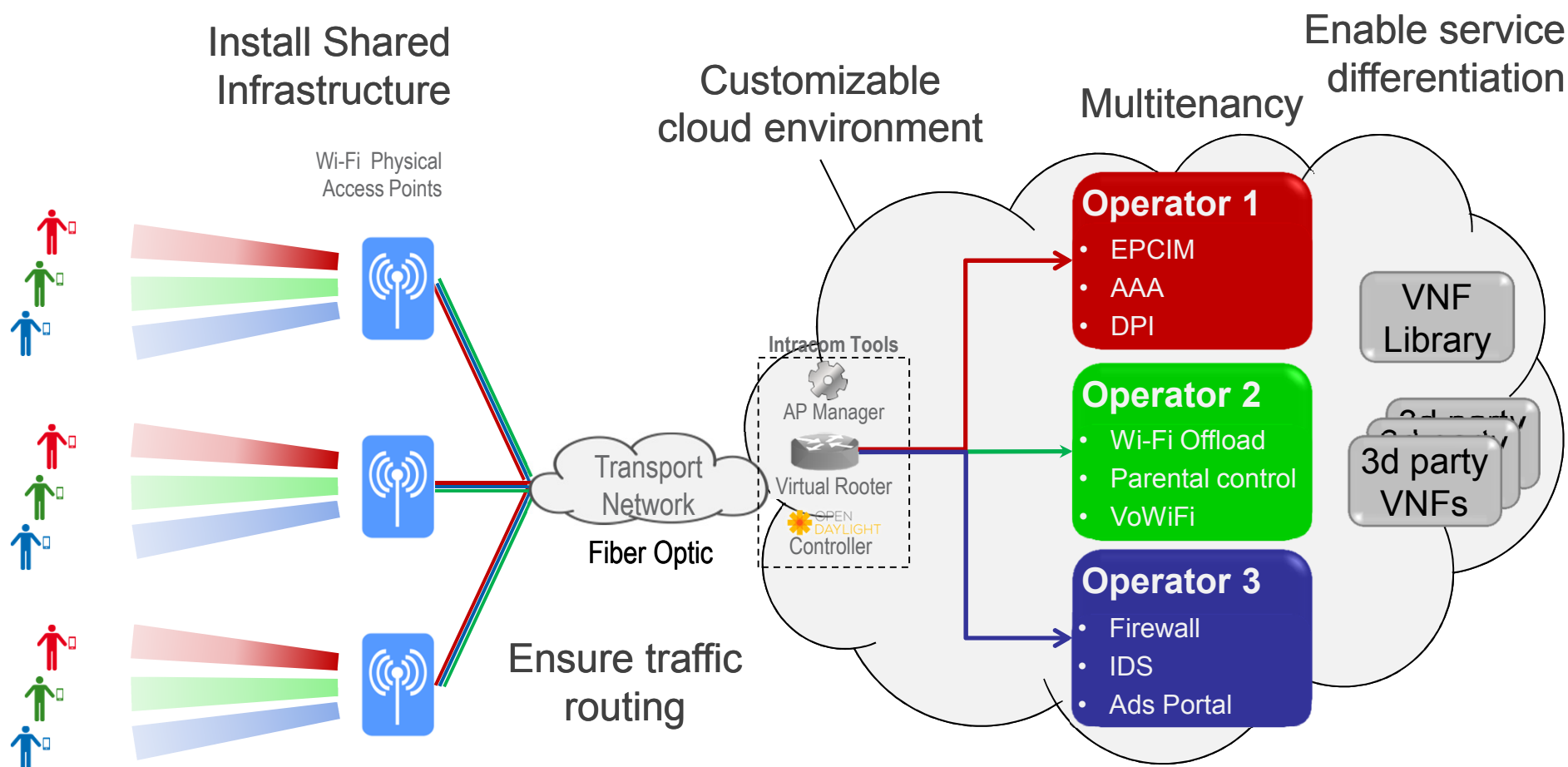




# Adding Intelligence to the network



# Virtualized Wi-Fi is an add-on over NFV

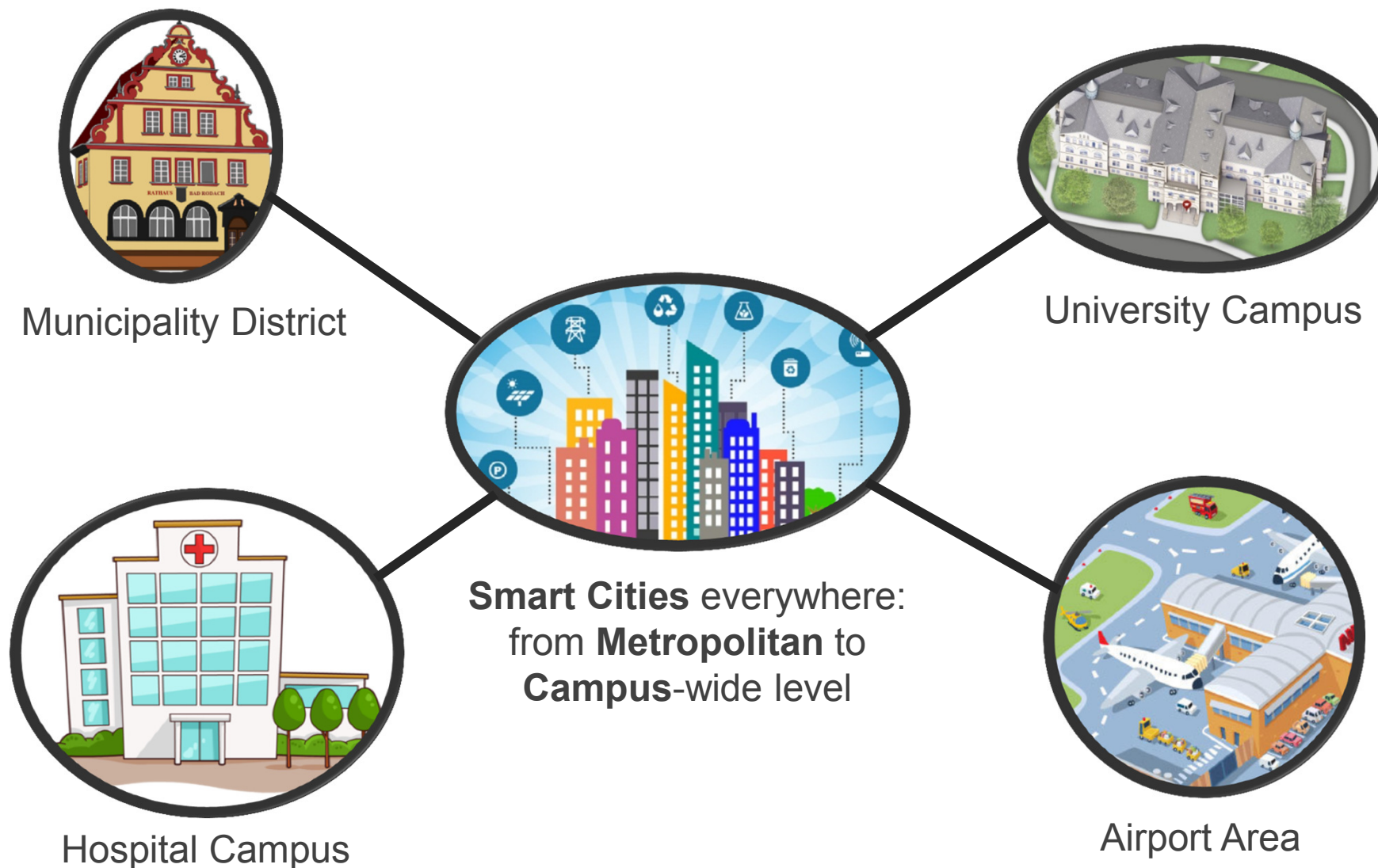


Announced in



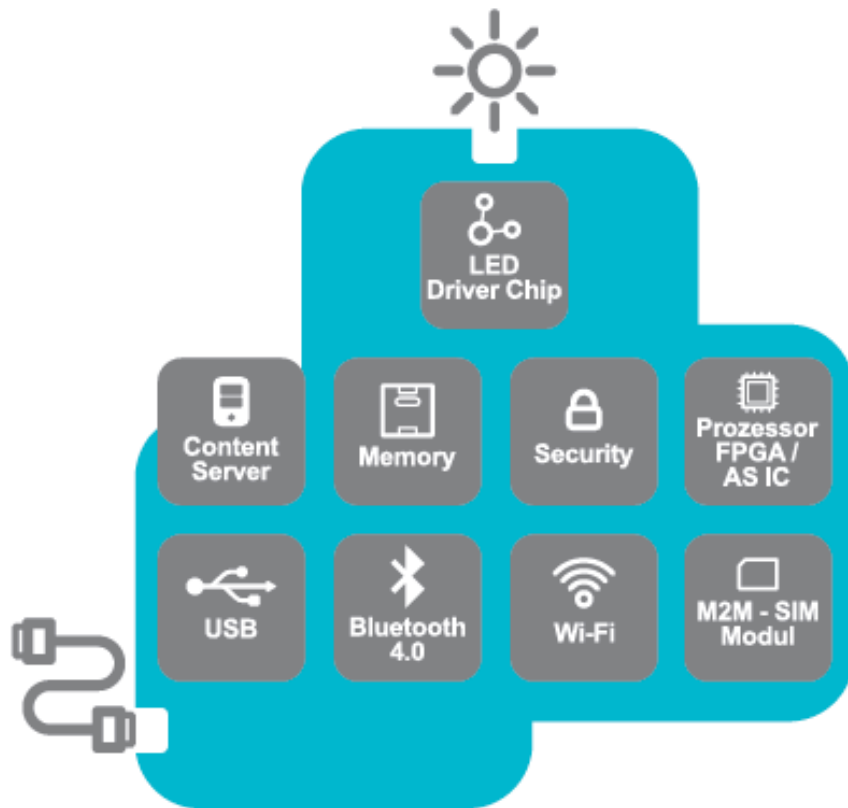
- VNF deployment 'at the **click of a button**' (DIY)
- Support operators' innovation at **low cost**
- Avoid '**cross-contamination**' due to misconfiguration
- Minimize time to market

# Who is Virtualized Wi-Fi for?





# Smart Lighting Application



- ▶ Transform lights into smart communication hubs through a complete end-to-end LED system combining local multi processor intelligence
- ▶ Deploy and offer Lighting as a Service, with a suite of cloud-based portal for lights management, remote management and maintenance
- ▶ Manage and monetize location-specific & personalized content push in touristic or other public areas
- ▶ Deploy and manage public high-speed WiFi hotspots – securely share or lease software defined network infrastructure to other Communications Service Providers

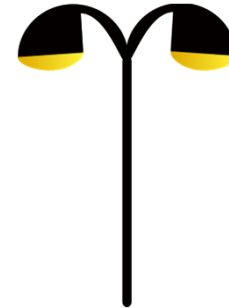
Announced in





## City Challenges

- ▶ Meet environmental & economic objectives
- ▶ Offer innovative digital services
- ▶ Generate new streams of revenue



## Smart Lighting

- ▶ Electricity savings
- ▶ Traffic info measurements
- ▶ Public messaging

Hint: Smart lighting infrastructure is very often **Wi-Fi enabled**

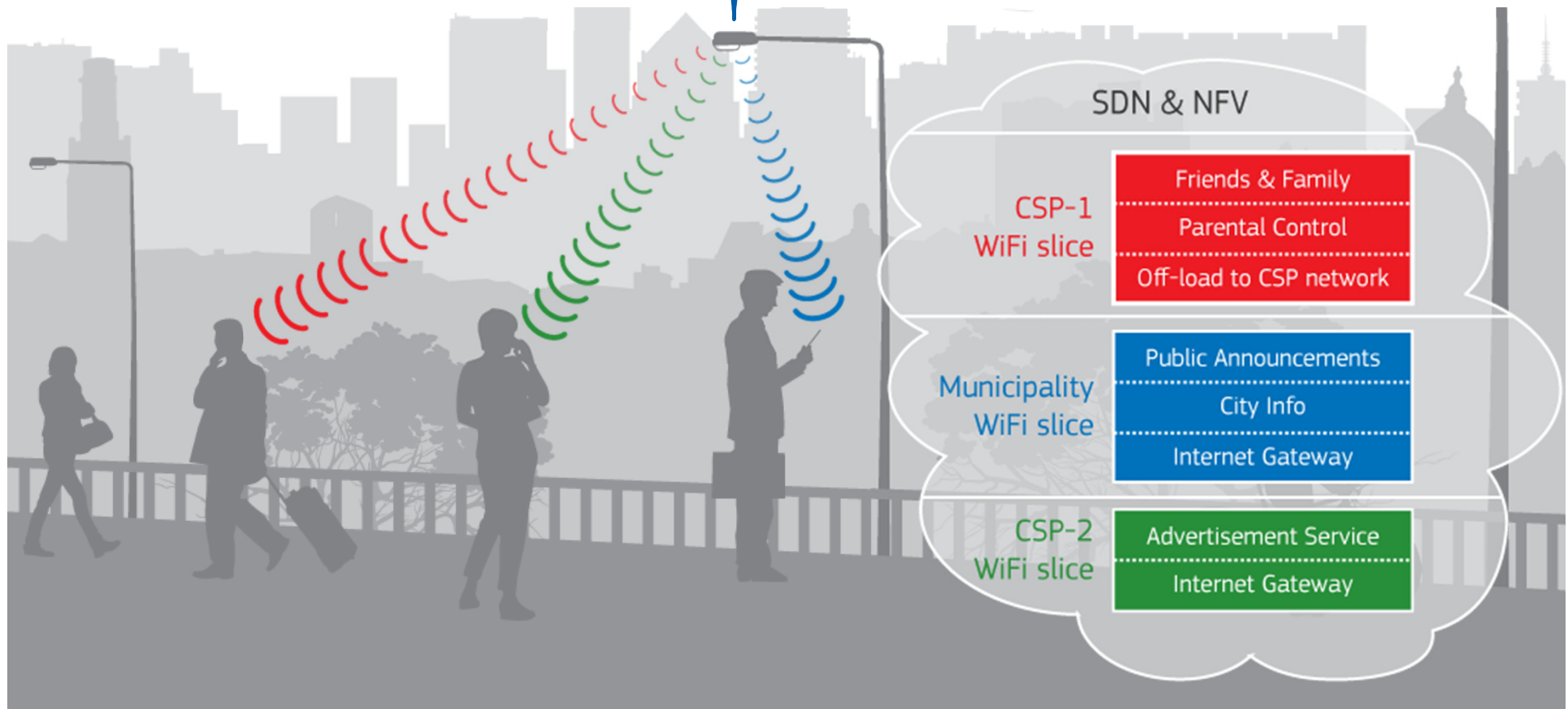


## Virtualized Wi-Fi

- ▶ Sell virtual slices of Wi-Fi capacity
- ▶ Fund shared infrastructure

# Smart Lighting Use Case

Wi-Fi access points are installed across the Smart City

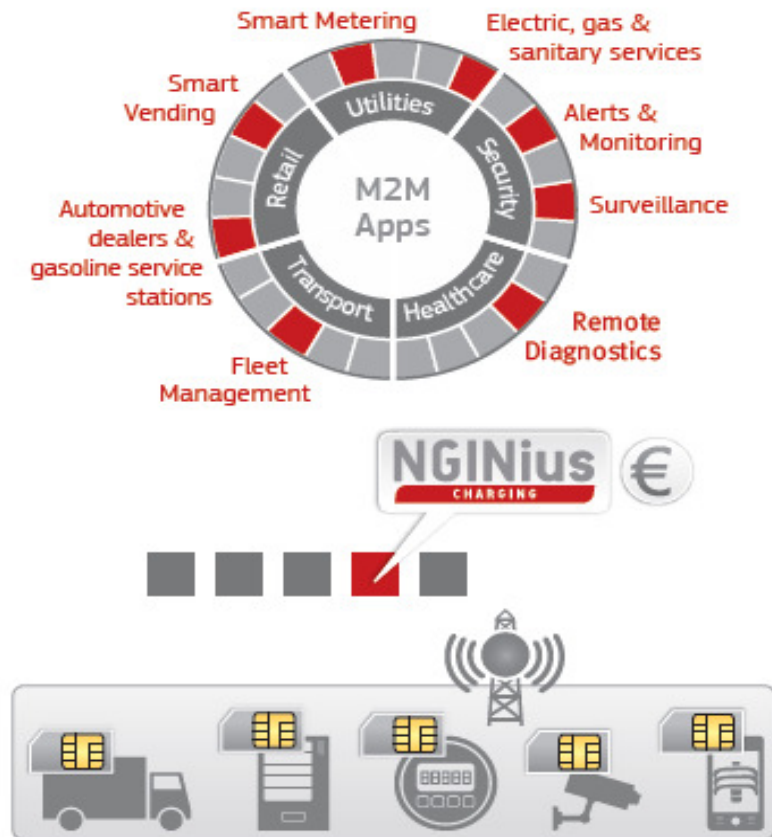


End-users experience the unique service offerings of their associated operator

Each virtual network manages only the traffic of its own subscribers



# Monetization



► IoT/M2M Revenue Management solution brings value across a number of vertical sectors including Logistics, Transportation, Retail, Utilities, Healthcare and Security, enabling Service Providers to introduce innovative business models. The solution includes:

1. IoT Customer profile & subscription management
2. IoT/M2M product catalogue
3. IoT/M2M SIM management and AAA
4. Partner management
5. Billing & Charging
6. Alerts & notifications

Announced in

 **MOBILE**  
WORLD CONGRESS  
BARCELONA 22-25 FEB 2016

thank  
you



**INTRACOM**  
**TELECOM**

Follow  


Link  
**in**

Watch  
